

GENERAL OFFENSE NUMBER 17-219301
UNIT FILE NUMBER CSI 17-041

TYPE OF INCIDENT Officer Involved Shooting	DATE OF INCIDENT 06/18/2017	SCENE LOCATION 6818 62 Avenue NE #4303	TYPE OF SCENE <input checked="" type="checkbox"/> INDOOR <input type="checkbox"/> OUTDOOR <input type="checkbox"/> VEHICLE
--	---------------------------------------	--	---

CALL-OUT INFORMATION			
DATE NOTIFIED 06/18/2017	TIME NOTIFIED 1035 hours	REQUESTED BY Lt. Steve Hirjak #5927 – Force Investigations Team (FIT)	
RECEIVED BY Sgt. Mark Grinstead #6378 – Crime Scene Investigations (CSI)		<input type="checkbox"/> IN PERSON <input checked="" type="checkbox"/> PHONE <input type="checkbox"/> RADIO <input type="checkbox"/> OTHER	TYPE OF CALL-OUT <input type="checkbox"/> ON-DUTY <input checked="" type="checkbox"/> OFF-DUTY

CRIME SCENE RESPONSE			
DATE OF ARRIVAL 06/18/2017	TIME OF ARRIVAL 1125 hours	CRIME SCENE PERSONNEL PRESENT Sgt. Grinstead, Detectives Biggs #6312, Haakenstad #6025 and Turner #6746	
CSI SCENE ASSIGNMENTS			
PRIMARY Det. Biggs <input checked="" type="checkbox"/> SPD <input type="checkbox"/> OTHER:			
PHOTOGRAPHY Det. Biggs <input checked="" type="checkbox"/> DIGITAL DEMS folders: 115285, 115384, 115538 (358 Photos)			
SKETCH / MAPPING Det. Haakenstad <input checked="" type="checkbox"/> SKETCH <input type="checkbox"/> TOTAL STATION			
EVIDENCE COLLECTION Det. Biggs, Det. Turner & Sgt. Grinstead <input type="checkbox"/> TRACE <input type="checkbox"/> FINGERPRINTS <input checked="" type="checkbox"/> OTHER: 26 Items, See Pages 17-20			
SPECIAL PROCESSING Det. Turner <input checked="" type="checkbox"/> Copper/Lead Ballistic Testing <input checked="" type="checkbox"/> Spherical panoramas (DEMS folder: 115346)			

NARRATIVE

A: ENVIRONMENT: Overall description of the scene, including but not limited to light conditions, weather, temperature, premise type, description of neighborhood / location, and the perimeter.

B: INITIAL INFORMATION: Describe the incident and list the types of police personnel that are present at the scene.

C: SCENE NARRATIVE: Describe in detail each room in a building or each area of an outdoor scene. List evidence collected in each room / area after each description.

D: INVOLVED PERSONS: Describe interactions with or observations about the person(s) involved in the incident. List evidence collected from each after their description.

E: MISCELLANEOUS: All additional information not included in the above sections.

ITEM A	<p>ENVIRONMENT:</p> <p>The scene that was processed was a two-bedroom, one-bathroom apartment and the adjacent hallway in <i>Brettler Family Place 3</i>, located at 6818 62 Avenue NE #4303. The apartment building is in northeast Seattle, adjacent to Magnuson Park. <i>Brettler Family Place 3</i> is owned by <i>Solid Ground</i> and managed by <i>Mercy Housing Management Group</i>. According to <i>Solid Ground's</i> website* "Brettler Family Place provides 21 units of affordable housing with supportive services for formerly homeless families."</p> <div style="display: flex; justify-content: space-around;">   </div> <p style="text-align: center;">Scene marked by red symbol View facing south towards <i>Brettler Family Place 3</i></p> <p>* https://www.solid-ground.org/careers/brettler-family-place-3-case-manager</p>
------------------	--

I HEREBY CERTIFY (DECLARE) UNDER PENALTY OF PERJURY UNDER THE LAWS OF THE STATE OF WASHINGTON THAT THIS REPORT IS TRUE AND CORRECT TO THE BEST OF MY KNOWLEDGE AND BELIEF (RCW 9A.72.085)					
PRIMARY DET'S SIGNATURE <i>Kim Biggs</i>	SERIAL # 6312	UNIT # B765	DATE SIGNED 07/18/2017	PLACE SIGNED Seattle, WA	
PRIMARY DETECTIVE'S PRINTED NAME Kim Biggs	SECONDARY DETECTIVE Lisa Haakenstad	SERIAL 6025	UNIT B765D	APPROVING OFFICER <i>St. 1116</i>	SERIAL 6378

ITEM OR ENTRY	PAGE 2 OF 21
---------------------	--------------

Apartment #4303 is located on the third floor, on the south side of the building. The apartment was cluttered and unkempt. Dirty dishes and old food were lying in the kitchen. The walls had numerous scrapes and holes.

The processing of the scene began and ended in the hours of full daylight. Apartment #4303 and the adjacent building hallway were adequately lit and no additional lighting was needed to process the scene.

The weather outside was overcast, but dry, with temperatures in the low to upper 60's. Humidity was 75-100%* during processing of the scene. The temperature inside the building and apartment however was quite warm, causing me to sweat without any exertion.

When I arrived, numerous SPD vehicles and personnel (including command staff) were outside the apartment building. Yellow crime scene tape barricaded the building from the general public. Residents of the building, however, had not been evacuated. The east and west interior stairways leading to the third floor were guarded by uniformed officers. Officer Sexton #7430 maintained the crime scene log at the third floor west stairwell.

B INITIAL INFORMATION:

On 06/18/2017, around 1035 hours, CSI Sgt. Grinstead received a call from FIT Lt. Hirjak requesting a CSI response to 6818 62 Avenue NE #4303 for a fatal officer involved shooting (OIS) incident.

I was already at the CSI processing facility when Sgt. Grinstead called me. Since I was to be the primary CSI Detective on this incident, I left the facility around 1055 hours, without waiting for CSI Detectives Haakenstad and Turner. I arrived at the scene around 1125 hours. Sgt. Grinstead was already on-scene. CSI Detectives Haakenstad and Turner arrived a short time later.

On-scene Homicide Detective Mooney #5826 provided me with the following information:

Two officers had been dispatched to a burglary call. There was hazard information on the complainant and/or apartment. Both officers had entered the apartment. The subject had at least one knife. Both officers had fired their pistols. Both SFD and SWAT personnel had been in the apartment. Three children had been taken out of the apartment. A fourth child was not at the apartment during the incident. The officers involved were Jason Anderson and Steven McNew.

FIT Det. Dewey #7426 is the primary case detective for this OIS. I was assigned as the primary CSI Detective.

* Internet website www.wunderground.com, referencing the Seattle (Boeing Field), Washington weather station for the date of 06/18/2017.

PRIMARY DETECTIVE	SERIAL	UNIT	SECONDARY DETECTIVE	SERIAL	UNIT	APPROVING OFFICER	SERIAL
Kim Biggs	6312	B765D	Lisa Haakenstad	6025	B765		6378

ITEM
OR
ENTRY

PAGE 3 OF 21

C SCENE NARRATIVE:

Photography:

I photographed the scene and evidence using a Department issued *Nikon D800* digital camera.

On Sunday 06/18/2017 at 1850 hours, I uploaded 226 scene photos to the SPD's *Digital Evidence Management System* (DEMS) under Image Folder #115285. (Note: The case number listed on the first photograph, the ID slide, was 17-219337. This was the case number I saw listed on the MDT for the OIS. However, I uploaded the photos to case #17-219301 when I found that it was the case number that FIT was using.)

On Monday 06/19/2017 at 1822 hours, I uploaded 57 evidence photos to DEMS Image Folder #115384.

On Wednesday 06/21/2017 at 1559 hours, I uploaded 75 clothing photos to DEMS Image Folder #115538.

At the scene, CSI Det. Turner used an *NCTech Iris360* camera to take seven spherical panorama images of the scene. He photographed both the apartment and the adjacent hallway.

Using *NCTech Immersive Studio* software, Det. Turner processed the raw data files for the *NCTech Iris360* spherical panorama images to viewable .jpg file extensions. The .jpg panorama image files were uploaded to the DEMS system under Image Folder #115346.

Spherical panoramic images require special viewing software to view properly. The processed images (.jpg file extensions) may be viewed using any spherical panorama software. A freeware version is available for download at <http://www.fsoft.it/FSPViewer/download/>.

Sketching:

Detective Haakenstad, with the assistance of Sgt. Grinstead and Det. Turner, measured the scene using a *Hilti PD38* laser measuring device. Det. Haakenstad later produced a scaled drawing of the scene using *CrimeZone* drafting software. (See diagrams on pages 4, 6 and 10.)

Hallways:

Apartment #4303 was accessed by a hallway running east/west. About 6 feet east of the apartment door, another hallway ran north. The body lay where these hallways intersected. The deceased's t-shirt and jacket appeared to have been cut off for medical intervention and were lying near the body at Placard 8. (See pages 14-16 and Property Report #733929 for clothing description.)

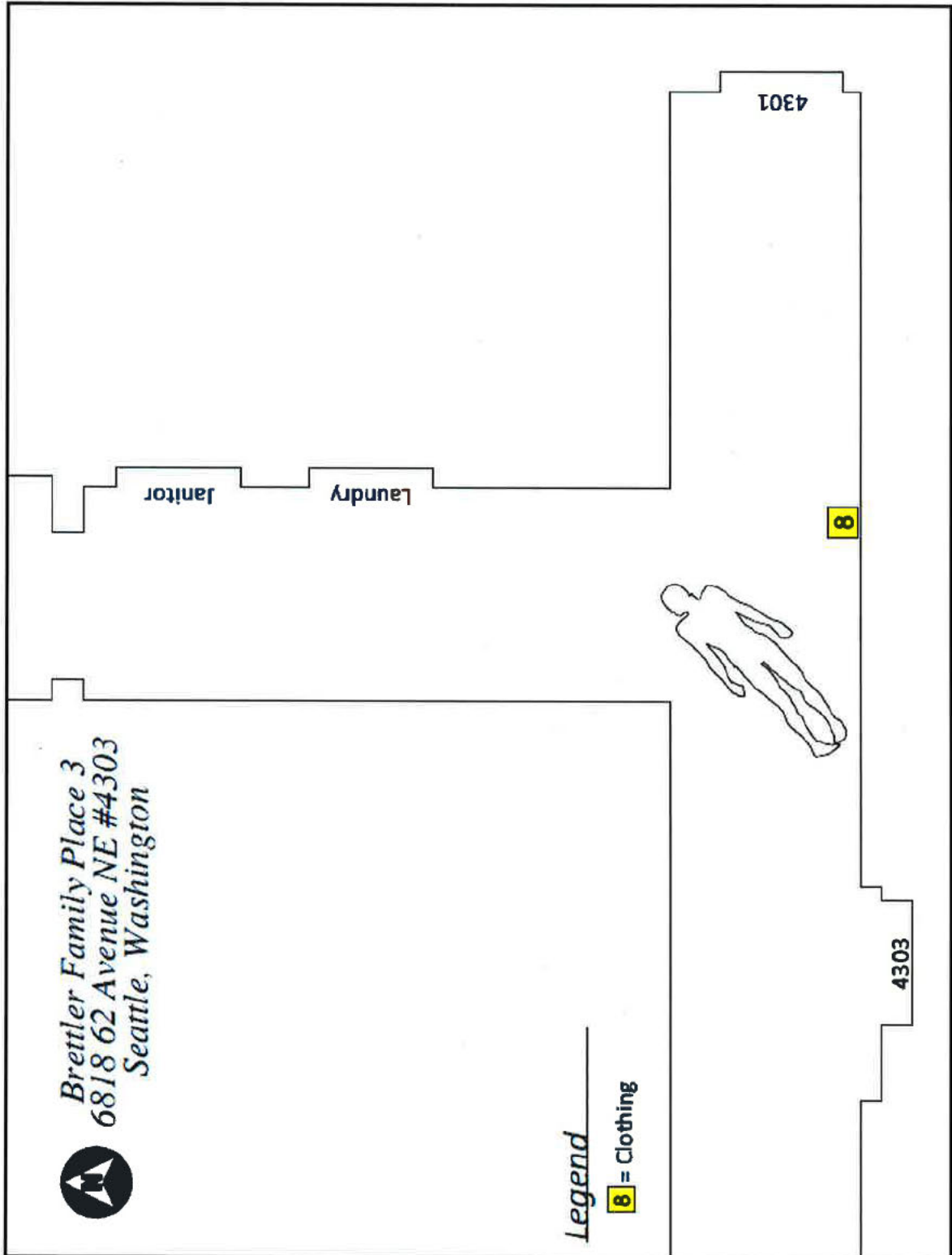
Body:

The deceased was lying face up, strapped to a backboard and covered with a yellow blanket. Medical debris was littered around the body. (All medical debris was later removed from the scene and disposed of per hazardous materials protocol.)

PRIMARY DETECTIVE	SERIAL	UNIT	SECONDARY DETECTIVE	SERIAL	UNIT	APPROVING OFFICER	SERIAL
Kim Biggs	6312	B765D	Lisa Haakenstad	6025	B765		10378

ITEM
OR
ENTRY

PAGE 4 OF 21



Hallway diagram showing location of deceased and her clothing at Placard 8

ITEM
OR
ENTRY

PAGE 5 OF 21

The deceased was identified as Charleena C. Lyles DOB:04/24/1987. Lyles was intubated, had attached defibrillator pads and other evidence of medical intervention. The deceased was wearing only black underwear and socks.

At approximately 1305 hours, King County Medical Examiner Dr. Brian Mazrim and Death Investigators Christin Tengelin and Nick Fletcher arrived. Dr. Mazrim conducted a preliminary examination of the deceased.

The deceased was placed in a body bag and secured with KCME tag #0024282. The King County Medical Examiner's case number for this death is 17-01206. KCME personnel transported the deceased to their facility for later autopsy.

Evidence from Apartment #4303: (See Property Report #733421 on pages 17-19)

Apartment #4303 was on the south side of the east/west hallway, just west of the north/south hallway.

I found the door to the apartment propped open by a red and black crumpled rug. On the rug, at Placard 1, was a fired cartridge case (FCC) (**Evidence Item #733421-1**). The headstamp was "SPEER 9mm LUGER+P."

Note: All seven FCCs recovered from the scene displayed headstamp "SPEER 9mm LUGER+P" and were consistent in appearance with Department issued duty ammunition. All seven of the FCCs were recovered from either the entrance area or the kitchen.

Behind the front door, at Placard 2, was a knife with a four-inch blade (**Evidence Item #733421-2**).

A large, trash-filled cardboard box, with its bottom falling out, was next to the entrance door. Three FCCs (**Evidence Items #733421-10, 11 and 12**) were recovered from the box.



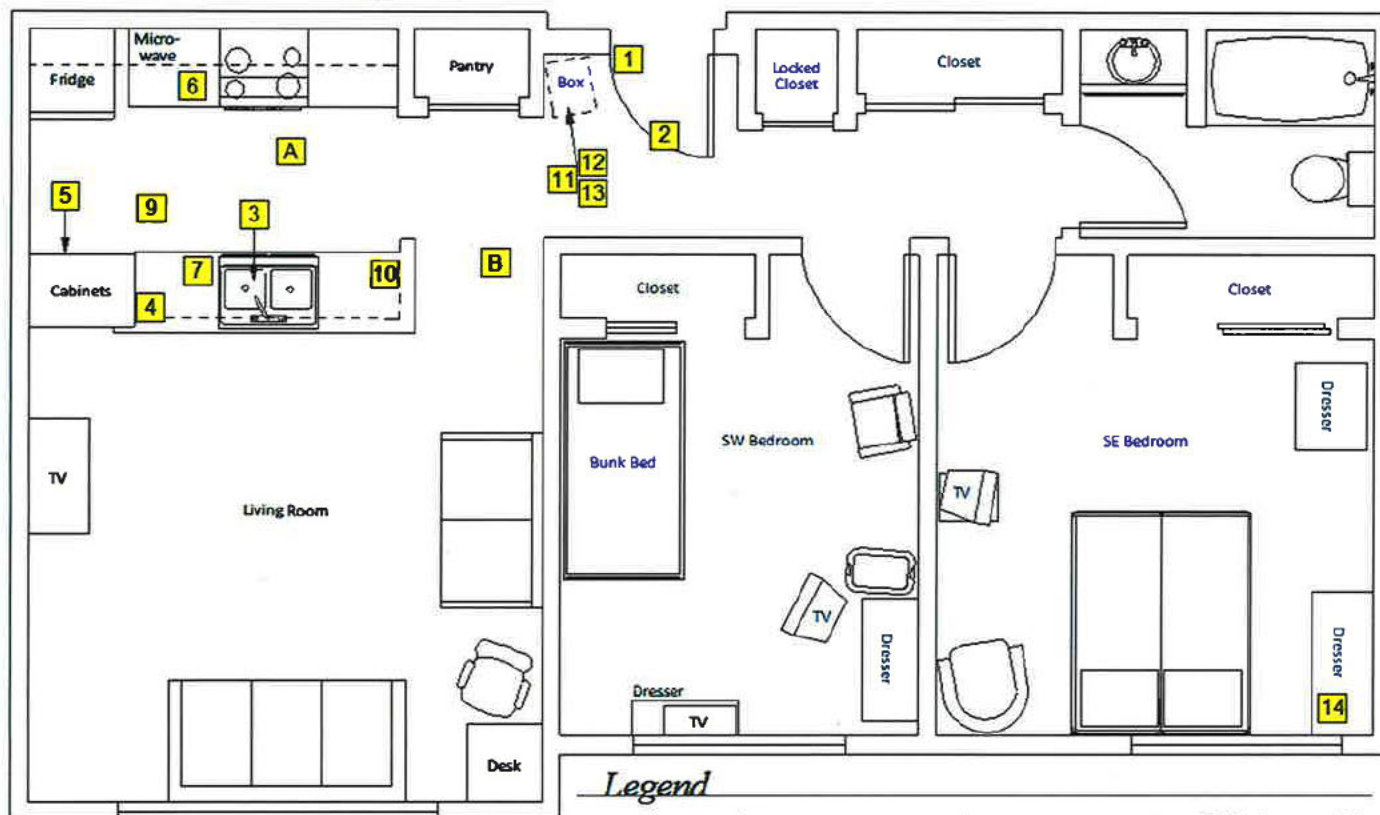
View from inside apartment towards front door.

PRIMARY DETECTIVE	SERIAL	UNIT	SECONDARY DETECTIVE	SERIAL	UNIT	APPROVING OFFICER	SERIAL
Kim Biggs	6312	B765D	Lisa Haakenstad	6025	B765	SGT [Signature]	6378

ITEM
OR
ENTRY

PAGE 6 OF 21

6818 62 Avenue NE #4303
Seattle, Washington



Legend

- | | | |
|--------------------------|---------------------------|----------------------|
| 1 - Fired Cartridge Case | 7 - Knife | 14 - Cell Phones (3) |
| 2 - Knife | 9 - Knife | A - Officer McNew |
| 3 - Fired Cartridge Case | 10 - Knife | B - Charleena Lyles |
| 4 - Fired Cartridge Case | 11 - Fired Cartridge Case | |
| 5 - Fired Cartridge Case | 12 - Fired Cartridge Case | |
| 6 - Knives (3) | 13 - Fired Cartridge Case | |

Apartment diagram

PRIMARY DETECTIVE

Kim Biggs

SERIAL

6312

UNIT

B765D

SECONDARY DETECTIVE

Lisa Haakenstad

SERIAL

6025

UNIT

B765

APPROVING OFFICER

5/6/17

SERIAL

6378

ITEM
OR
ENTRY

PAGE 7 OF 21



FCC recovered at Placard 1



Knife recovered at Placard 2

The galley kitchen was in the northwest corner of the apartment, west of the entrance area. The kitchen was separated from the living room by a counter that contained the kitchen sink. Above the counter was open with a view into the living room.



South kitchen counter showing the locations of knives at Placards 7, 9 and 10. View facing south.

I recovered six knives from the kitchen. Two of the knives were recovered from the south kitchen counter at Placards 7 and 10. At Placard 7 was a black handled knife with a 4-3/4 inch blade (**Evidence Item #733421-7**). At Placard 10 was a black handled knife with an 8-inch blade (**Evidence Item #733421-9**). At Placard 9, on the kitchen floor, under a green bag, was a black handled knife with a 3-inch blade (**Evidence Item #733421-8**).

PRIMARY DETECTIVE

Kim Biggs

SERIAL

6312

UNIT

B765D

SECONDARY DETECTIVE

Lisa Haakenstad

SERIAL

6025

UNIT

B765

APPROVING OFFICER

[Signature]

SERIAL

6378

ITEM
OR
ENTRY

PAGE 8 OF 21



Knife on kitchen floor



Three knives on north kitchen counter at Placard 6

On the north kitchen counter, between the microwave and stove, at Placard 6, I recovered the remaining three kitchen knives (**Evidence Item #733421-6**).

As described on page 5, four fired cartridge cases (FCCs) were recovered from the front door entrance area. I recovered the remaining three FCCs in the kitchen. In the right/west side of the kitchen sink, at Placard 3, was a FCC (**Evidence Item #733421-3**). On the south kitchen counter, in the southwest corner at Placard 4 was another FCC (**Evidence Item #733421-4**). On the southwest corner of the kitchen floor, at Placard 5, was another FCC (**Evidence Item #733421-5**).

The remainder of the apartment was searched for any additional evidence. In the southeast bedroom three cellphones (**Evidence Item #733421-13**) were recovered. The cellphones were on top of a dresser in the southeast corner of the room at Placard 14. A white *Samsung*, in a black and gray *Everclear* protector, was found and packaged in the "on" mode. The other two cellphones were either off or had dead batteries.

Ballistic Evidence in Apartment #4303:

The apartment was examined for possible bullet defects. I identified four defects that appeared to have been made by bullets. Defects 1-4 were roughly located where the entrance area, kitchen and living room intersected. (See diagram on page 10.)

Defect 5 (D5) was on the east edge of the southeast bedroom door frame. It was photographed. Upon closer inspection, D5 did not visually appear to be a bullet defect.

Det. Turner tested each of these defects using a *BTK Bullet Testing Kit* from *Jant Pharmacal Corporation*. The defects were first tested for copper and then for lead residue. The kit uses a chemical method to detect if the margins of a suspected bullet hole have copper or lead residue. (Lead and copper are the main components of bullet cores and jackets.)

Defects 1, 4 and 5 showed no reaction for the presence of copper or lead. Defect 2 had a positive reaction for the presence of copper residue. Defect 3 had positive reactions for the presence of both copper and

PRIMARY DETECTIVE	SERIAL	UNIT	SECONDARY DETECTIVE	SERIAL	UNIT	APPROVING OFFICER	SERIAL
Kim Biggs	6312	B765D	Lisa Haakenstad	6025	B765	<i>See [Signature]</i>	6378

ITEM
OR
ENTRY

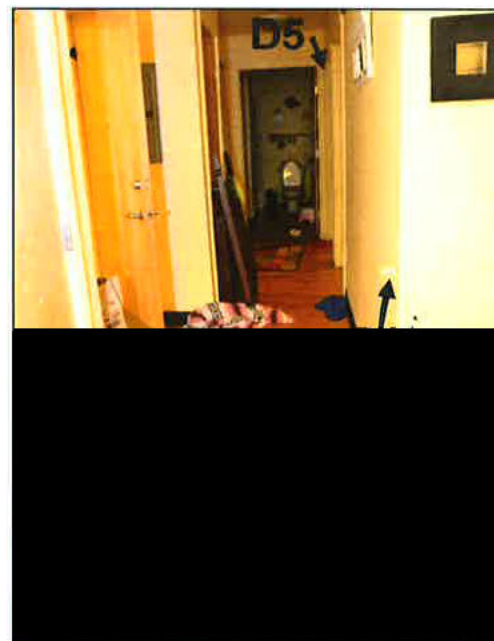
PAGE 9 OF 21

lead residue. The copper and lead test gauzes were retained from each defect (**Evidence Item #733421-18**).

DEFECT	COPPER	LEAD	HEIGHT UP FROM FLOOR	TRAJECTORY DIRECTION (Approximate)
D1	No Reaction	No Reaction	2.7 feet	West to East
D2	No Reaction	Positive	3.1 feet	NE to SW
D3	Positive	Positive	On floor	NE to SW
D4	No Reaction	No Reaction	2.1 feet	West to East
D5	No Reaction	No Reaction	5.8 feet	N/A



Defects 1, 2 & 3 as seen from front entrance.
View looking west towards kitchen.
(Arrows do not indicate direction of bullet path.)



Defects 1, 4 & 5 as seen from kitchen.
View looking east towards bathroom.
(Arrows do not indicate directionality.)

From Defects 1 - 4, four jacketed hollow-point fired bullets were retrieved. At Defects 1 and 4, the bullets perforated the drywall and were recovered inside the wall, on the bottom plate. At Defect 2 the bullet penetrated the end of a half wall and was imbedded in the drywall. At Defect 3, the bullet was imbedded in the wood floor. No fired bullet was located in or near Defect 5.



C.S.I CONTINUATION SHEET

INCIDENT NUMBER

17-219301

UNIT FILE NUMBER

CSI 17-041

ITEM
OR
ENTRY

PAGE 10 OF 21

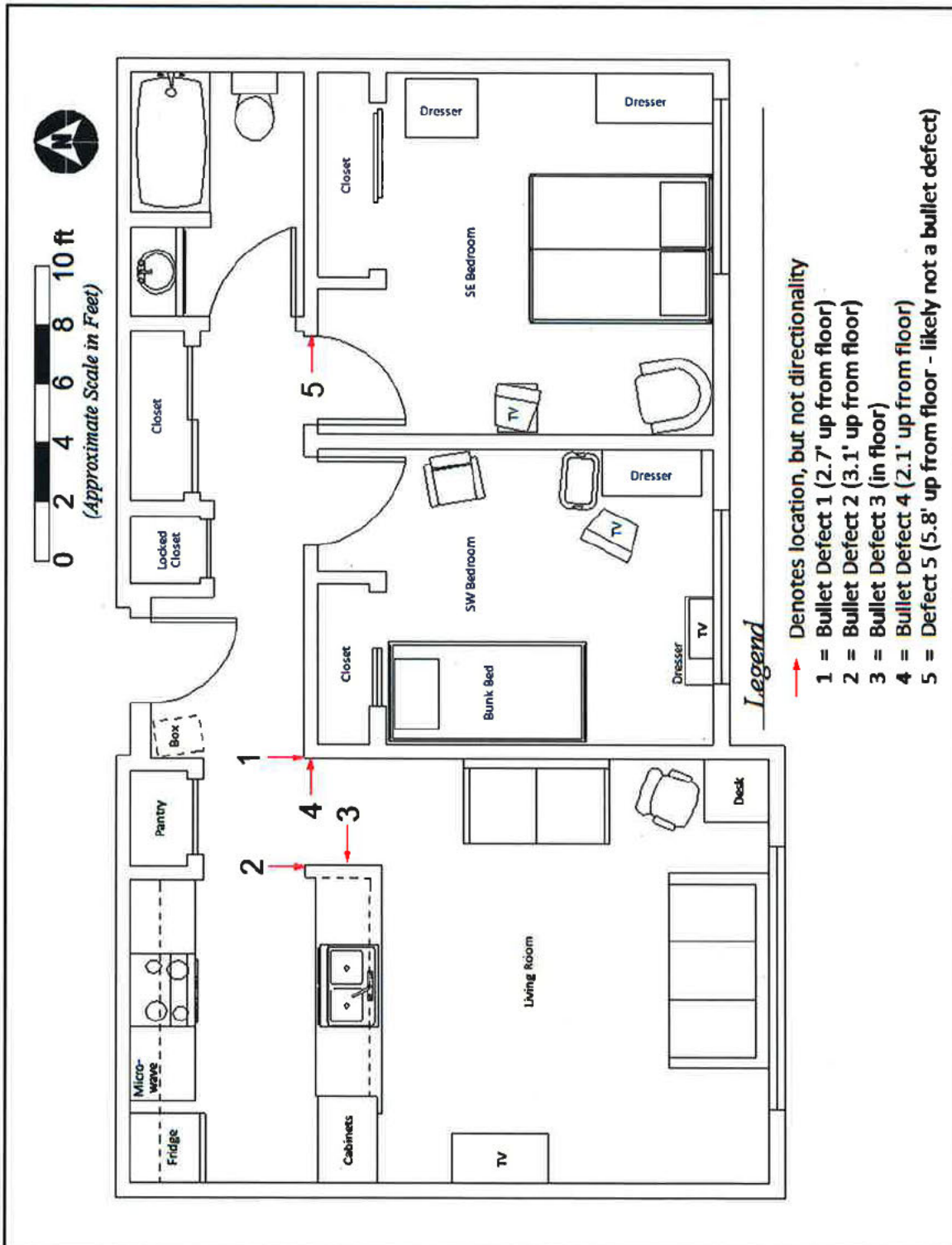


Diagram showing Bullet Defects 1-4 and Defect 5

PRIMARY DETECTIVE

Kim Biggs

SERIAL

6312

UNIT

B765D

SECONDARY DETECTIVE

Lisa Haakenstad

SERIAL

6025

UNIT

B765

APPROVING OFFICER

[Signature]

SERIAL

6378

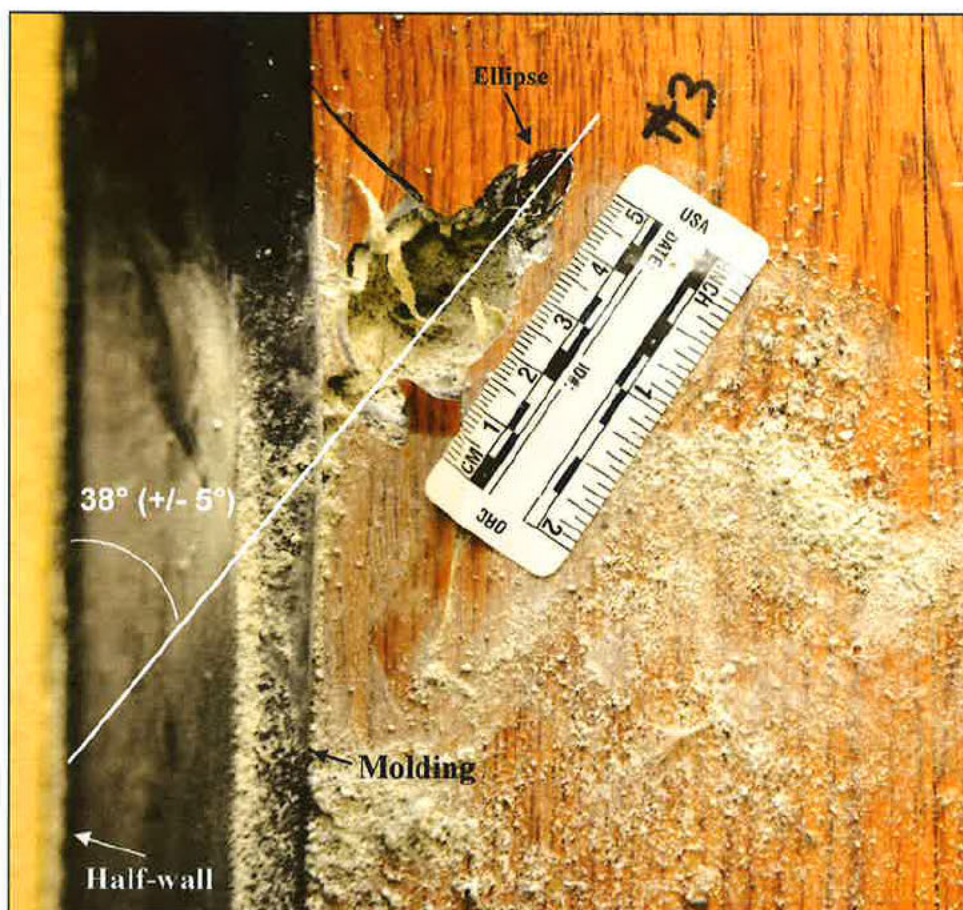
ITEM
OR
ENTRY

PAGE 11 OF 21

I took close-up photographs and examined each defect. Based on the appearance of the defects, I determined that the bullets terminating at Defects 1 and 4 were traveling roughly from west to east (from the kitchen). The bullets terminating at Defects 2 and 3 were traveling roughly from the northeast to the southwest (from the front door/entrance way).

The bullets terminating at Defects 1-4 did not pass through fixed, intermediate surfaces. Therefore, it was not possible to determine bullet trajectory by measuring a line between two fixed points.*

Defect 3 was in the wood floor, just east of the half-wall. Defect 3 had a visible elliptical shape at its entry point.



Defect 3 (Grid North is up, toward top of page)

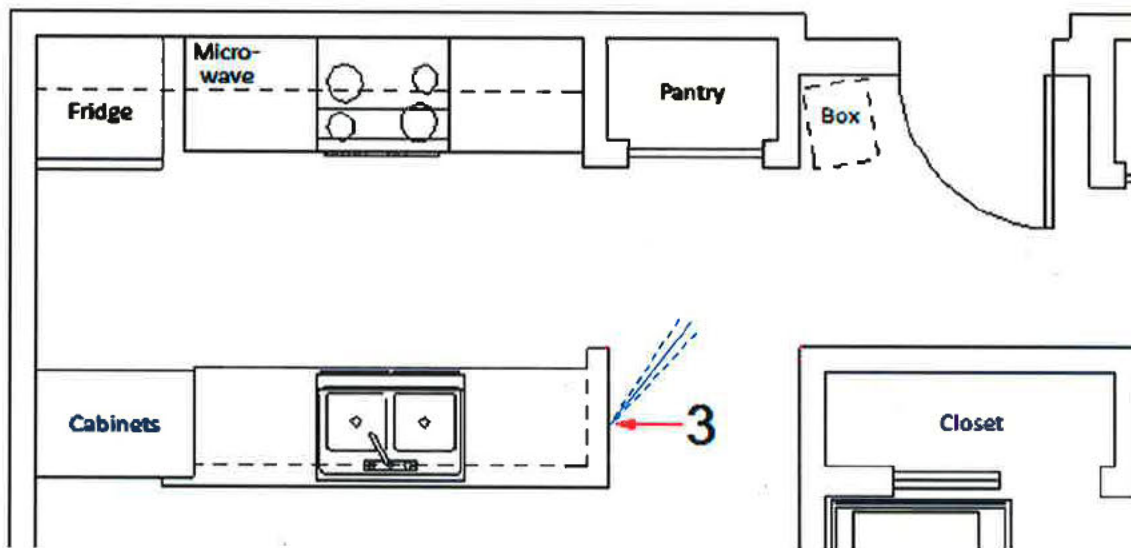
Directionality can be estimated by determining the long axis of the elliptical shape of the defect. For Defect 3, I determined that the round struck the wood floor at a grid azimuth angle of approximately 38° +/- 5° *. This is the estimated direction from which the bullet struck the floor, which is roughly from the direction of the entrance way.

*Shooting Incident Reconstruction 2nd edition by Michael G. Haag and Lucien C. Haag, page 187.

PRIMARY DETECTIVE	SERIAL	UNIT	SECONDARY DETECTIVE	SERIAL	UNIT	APPROVING OFFICER	SERIAL
Kim Biggs	6312	B765D	Lisa Haakenstad	6025	B765	<i>[Signature]</i>	6370

ITEM
OR
ENTRY

PAGE 12 OF 21



NW corner of apartment with bullet path trajectory from Lyles to Defect 3 indicated by solid blue line.
Dashed lines indicate +/- 5°. (For illustrative purposes only)

The incident angle* of the bullet striking the floor is determined by measuring the length and width of the elliptical defect. The arcsine of the ratio of the width divided by the length provides an estimated incident angle. Based on my measurements, I estimate the incident angle to be approximately 36° +/- 5° up from the floor.

According to the KCME Autopsy Report, Lyles was shot seven times. Three bullets remained in her body and four exited her body. Therefore, the four bullets recovered from the scene had all struck Lyles, including the bullet that created Defect 3. Bullets may deviate as they pass through tissue, organs and other bodily structures. Therefore, the directionality and incident angle based on the Defect 3 ellipse are from Lyles to Defect 3, not from Officer Anderson's duty weapon to Defect 3.

Bullet Defects 1, 2 and 4, had irregular shapes that did not have measurable ellipses and did not lend themselves to estimating trajectory by this method.

Perspective Photography:

Around 1420 hours, FIT Det. Dewey #7426 and involved Officer McNew #7451 re-entered the apartment. Placard "A" was placed where Officer McNew believed he was standing when he fired his duty weapon. Placard "B" was placed where Officer McNew believed the deceased was standing when he fired his duty weapon. Involved Officer Anderson #8329 did not return to the apartment.

I used a *Nikkor* fixed focal length 50mm lens to take perspective photography. This lens more closely approximates what the human eye is capable of seeing under ideal conditions. Photographs were taken from "A" towards "B" and from "B" towards "A".

***Incident Angle:** "The intercept angle described by the pre-impact flight path of the projectile and the plane of the impact surface at the impact site when viewed in profile" *Shooting Incident Reconstruction* 2nd edition by Michael G. Haag and Lucien C. Haag

PRIMARY DETECTIVE	SERIAL	UNIT	SECONDARY DETECTIVE	SERIAL	UNIT	APPROVING OFFICER	SERIAL
Kim Biggs	6312	B765D	Lisa Haakenstad	6025	B765	<i>SBT M</i>	6378

C.S.I CONTINUATION SHEET

INCIDENT NUMBER
17-219301

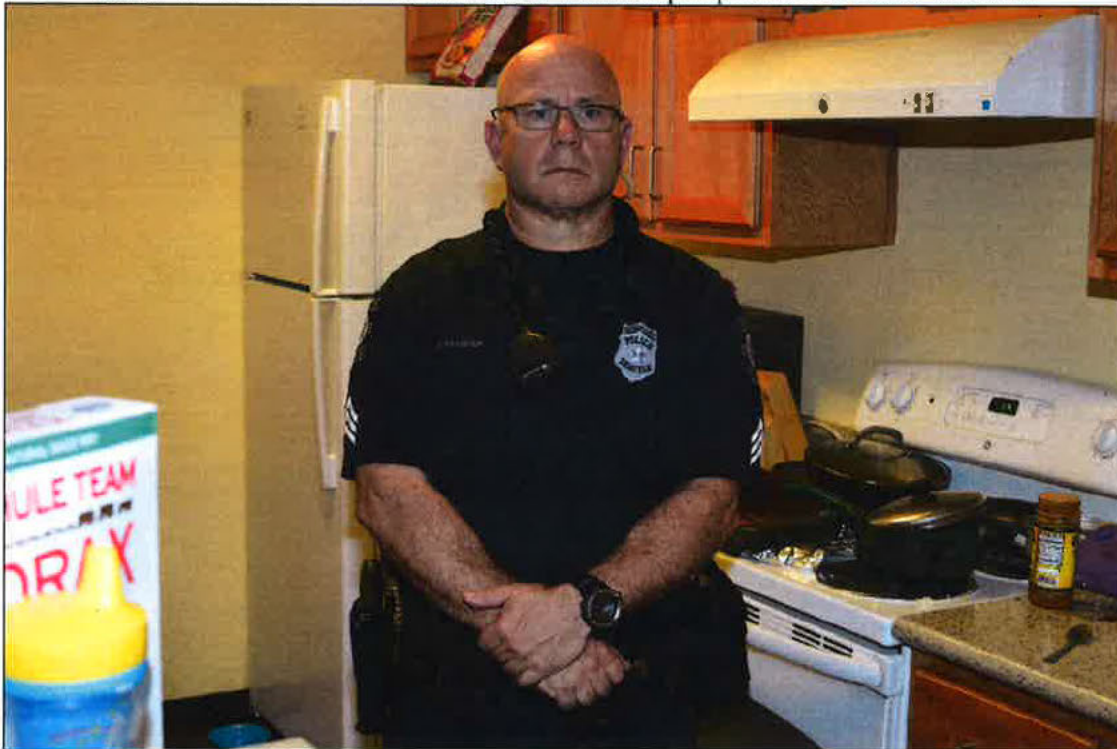
UNIT FILE NUMBER
CSI 17-041

ITEM
OR
ENTRY

PAGE 13 OF 21



From "A" towards "B." Possible view from the perspective of Officer McNew.



From "B" towards "A." Possible view from the perspective of the subject Lyles.

PRIMARY DETECTIVE	SERIAL	UNIT	SECONDARY DETECTIVE	SERIAL	UNIT	APPROVING OFFICER	SERIAL
Kim Biggs	6312	B765D	Lisa Haakenstad	6025	B765	<i>[Signature]</i>	6378

ITEM
OR
ENTRY

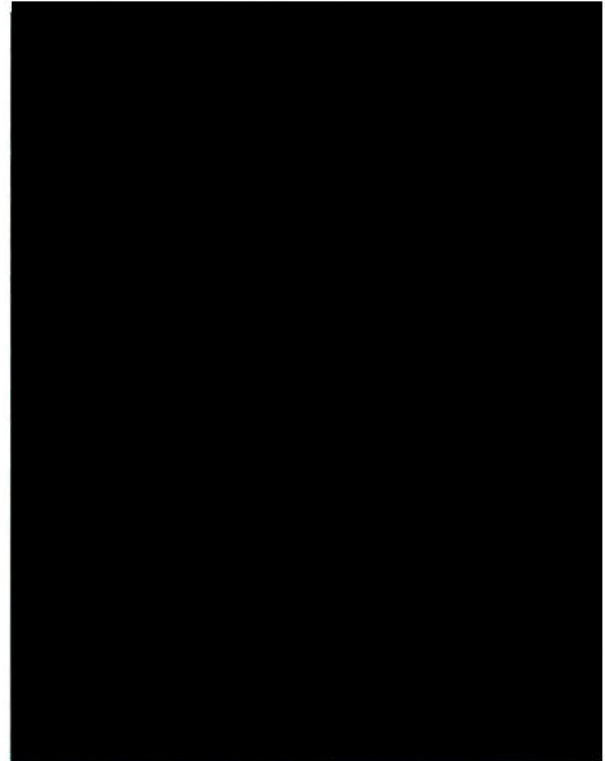
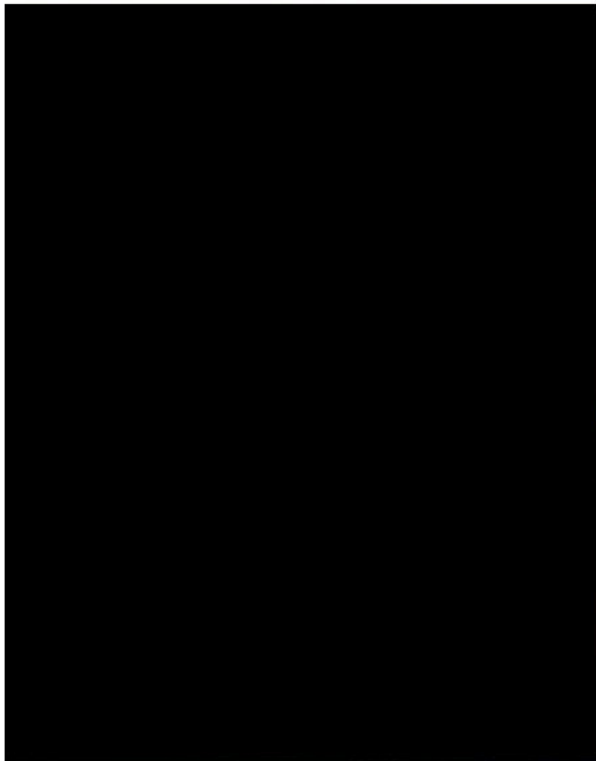
PAGE 14 OF 21

Clothing:

In the hallway near the deceased, was a pile of bloodstained clothing, marked with Placard 8. (See diagram on page 4.) The clothing was collected and later hung in CSI's secure forensic drying cabinet.

On Wednesday 06/21/17 I removed the clothing from the drying cabinet. With CSI Det. Abed's #6270 assistance, I examined and photographed the clothing. There were only two pieces of clothing and both appeared to have been cut during medical intervention. *

The first piece of clothing was a purple short-sleeved shirt (**Evidence Item #733929-1**). Two possible bullet defects were located on the front, one on the right side and two on the back.*



Deceased's tee-shirt. Green arrows point to possible bullet defects.

* Note: The cuts made to the clothing for medical intervention may have obscured existing bullet defects.

PRIMARY DETECTIVE	SERIAL	UNIT	SECONDARY DETECTIVE	SERIAL	UNIT	APPROVING OFFICER	SERIAL
Kim Biggs	6312	B765D	Lisa Haakenstad	6025	B765	<i>[Signature]</i>	6378

ITEM
OR
ENTRY

PAGE 15 OF 21



Front of down jacket. Green arrows point to possible bullet defects.



Back of down jacket. Green arrows point to possible bullet defects.

The other piece of clothing was a heavy, $\frac{3}{4}$ length, hooded, down parka (**Evidence Item #733929-2**). This heavy jacket was incongruent with the warm temperature and humidity in the apartment. Four possible bullet defects were located on the front, one on the anterior side of the right arm and four on the back. It is possible that the two apparent bullet defects to the right breast pocket were caused by only one bullet when the jacket material was folded over onto itself.

Several items were recovered from the pockets of the down jacket. In the left breast pocket was a perforated Washington ID card issued to Lyles and a cracked *Seattle Public Library* card (**Evidence Item #733929-5**). Given the probable bullet defect to the left breast pocket, the cards may have been damaged by a bullet. \$1.10 in change was also recovered from the pocket (**Evidence Item #733929-8**).

In the lower left jacket pocket was a black handled knife with a 4-1/2 inch blade (**Evidence Item #733929-3**). Also in this pocket was \$17.25 (**Evidence Item #733929-8**), a *Washington Quest* card, a *King County Metro* transfer ticket, a keychain sized *Seattle Public Library* card, earbuds and a used tissue (**Evidence Item #733929-4**).

The right lower pocket had a tear at the bottom of it. Below this pocket in the lining hem, was a pink *BIC* lighter (**Evidence Item #733929-7**) and a knife sheath (**Evidence Item #733929-6**). The knife sheath appeared to belong to the knife (**Evidence Item #733421-2**) that was recovered near the front door at Placard 2. The knife handle and the sheath appeared to be made of the same brown plastic material. Also the length and shape of the sheath and knife blade were compatible.

PRIMARY DETECTIVE	SERIAL	UNIT	SECONDARY DETECTIVE	SERIAL	UNIT	APPROVING OFFICER	SERIAL
Kim Biggs	6312	B765D	Lisa Haakenstad	6025	B765	<i>[Signature]</i>	0378

ITEM
OR
ENTRY

PAGE 16 OF 21



Knife recovered from left pocket of jacket



Knife sheath recovered from lining below right pocket

Neither the medical examiner, nor CSI recovered any pants, shorts or skirt worn by the deceased. It appears that the deceased was not wearing any lower body garment other than her underwear during the incident. Her $\frac{3}{4}$ length heavy down jacket may have concealed this lack of clothing.

Shot Accounting:

Seven FCCs were recovered from the scene. All were recovered from either the entrance area or the kitchen. All displayed headstamp "SPEER 9mm LUGER+P" and were consistent in appearance with Department issued duty ammunition.

Four fired, jacketed, hollow-point bullets were recovered at the scene. Later, three fired jacketed, hollow-point bullets were recovered from the body during autopsy. These seven fired bullets matched in number to the seven FCCs recovered from the scene.

Recovered FCCs	Number Recovered
Scene	7

Recovered Fired Bullets	Recovered Number
Scene	4
Autopsy	3
Total	7

PRIMARY DETECTIVE

Kim Biggs

SERIAL

6312

UNIT

B765D

SECONDARY DETECTIVE

Lisa Haakenstad

SERIAL

6025

UNIT

B765

APPROVING OFFICER

[Signature]

SERIAL

6378

ITEM OR ENTRY		PAGE 17 OF 21
	<p>Property Report #733421: The following items of evidence were recovered from the scene under my direction on Sunday 06/18/2017. They were stored overnight in secured CSI cage #1. On Monday 06/18/2017, I photographed, packaged and sealed the items. I then submitted them to the SPD Evidence Unit under Property Report #733421.</p> <p>Note: There were several general offense (GO) case numbers associated with the burglary/OIS. Since I did not know which GO number FIT was using, the scene evidence was originally submitted under an associated case number. This was changed on 06/22/2017 to reflect the GO case number that FIT was using.</p>	
	<p>Evidence Item #733421-1 FCC Headstamp "SPEER 9mm LUGER+P" Recovered at Placard 1 on rug in entrance doorway by Det. Biggs</p>	
	<p>Evidence Item #733421-2 Knife Four inch (4") blade, brown plastic oval handle, "Stainless Steel Made in Japan" Recovered at Placard 2 on floor in entrance by Det. Biggs</p>	
	<p>Evidence Item #733421-3 FCC Headstamp "SPEER 9mm LUGER+P" Recovered at Placard 3 in right/west side of kitchen sink by Det. Biggs</p>	
	<p>Evidence Item #733421-4 FCC Headstamp "SPEER 9mm LUGER+P" Recovered at Placard 4, at the SW corner of the south kitchen counter top, west of sink by Det. Biggs</p>	
	<p>Evidence Item #733421-5 FCC Headstamp "SPEER 9mm LUGER+P" Recovered at Placard 5 on kitchen floor (SW corner) by Det. Biggs</p>	
	<p>Evidence Item #733421-6 Three Knives 1: Six inch (6") blade, light brown wooden handle, dirty "Chef's Collection Stainless Steel", "Stainless Taiwan" 2: 5-1/2" blade, black handle, "Farberware", "China" 3: 4-1/2" blade, dirty, "Farberware" All three recovered at Placard 6 on north kitchen counter top, west of stove by Det. Biggs</p>	
	<p>Evidence Item #733421-7 Knife 4-3/4" blade, black handle, "3007283" Recovered at Placard 7 on south kitchen counter top, west of sink by Det. Biggs</p>	
PRIMARY DETECTIVE	SERIAL UNIT	SECONDARY DETECTIVE SERIAL UNIT APPROVING OFFICER SERIAL
Kim Biggs	6312 B765D	Lisa Haakenstad 6025 B765 <i>[Signature]</i> 6370

C.S.I CONTINUATION SHEET

INCIDENT NUMBER	17-219301
UNIT FILE NUMBER	CSI 17-041

ITEM OR ENTRY		PAGE 18 OF 21					
Evidence Item #733421-8	Knife Three inch (3") blade, black handle, "Farberware", "China" Recovered at Placard 9 on kitchen floor under green bag by Det. Biggs						
Evidence Item #733421-9	Knife Eight inch (8") blade, black handle, "China" Recovered at Placard 10 on south kitchen counter top (east end) by Det. Biggs						
Evidence Item #733421-10	FCC Headstamp "SPEER 9mm LUGER+P" Recovered under box that was west of entrance door (Placard 11) by Det. Biggs						
Evidence Item #733421-11	FCC Headstamp "SPEER 9mm LUGER+P" Recovered from box that was west of entrance door by Det. Biggs Identified by Placard 12						
Evidence Item #733421-12	FCC Headstamp "SPEER 9mm LUGER+P" Recovered from box that was west of entrance door by Det. Biggs Identified with Placard 13						
Evidence Item #733421-13	Three Cellphones 1: White <i>Samsung</i> in black and gray <i>Everclear</i> protector Recovered in "on" mode 2: Turquoise <i>Samsung Galaxy J1</i> , <i>Verizon 4G LTE</i> 3: Black <i>Blackberry Cricket</i> All three recovered at Placard 14, on top of SE dresser in SE bedroom by Det. Biggs						
Evidence Item #733421-14	Fired Bullet Copper jacketed, hollow point fired bullet Recovered from inside of wall at bottom plate by Sgt. Grinstead, associated with Bullet Defect 1						
Evidence Item #733421-15	Fired Bullet Copper jacketed, hollow point fired bullet Recovered from inside of half wall by Sgt. Grinstead, associated with Bullet Defect 2						
Evidence Item #733421-16	Fired Bullet Copper jacketed, hollow point fired bullet Recovered embedded in floor by Sgt. Grinstead at Bullet Defect 3						
PRIMARY DETECTIVE	SERIAL	UNIT	SECONDARY DETECTIVE	SERIAL	UNIT	APPROVING OFFICER	SERIAL
Kim Biggs	6312	B765D	Lisa Haakenstad	6025	B765	<i>[Signature]</i>	6378

ITEM
OR
ENTRY

PAGE 19 OF 21

Evidence Item #733421-17
Fired Bullet

Copper jacketed, hollow point fired bullet
Recovered from inside of wall at bottom plate by Det. Turner,
associated with Bullet Defect 4

Evidence Item #733421-18
Bullet Defect Test Results

Copper and lead test patches for Bullet Defects 1-5
Det. Turner tested the defects. He also labeled and packaged the
test patches in individual plastic bags

Property Report #733929:

On Sunday 06/18/2017, I recovered a pile of bloodstained clothing from Placard 8 in the 3rd floor hallway. Upon returning from the scene to the secured CSI processing facility, I hung the clothing in CSI's forensic drying cabinet "B." I placed a single-use security tag marked with my initials on the cabinet. On Wednesday 06/21/2017, I removed the clothing from the cabinet to examine, photograph, package and seal the evidence. CSI Det. George Abed #6270 assisted me. I submitted the evidence to the SPD Evidence Unit under Property Report #733929.

Evidence Item #733929-1
Tee Shirt

White and purple bloodstained *Mr. Men Little Miss* tee shirt,
Apparently cut during medical intervention
Recovered from Placard 8

Evidence Item #733929-2
Down Jacket

Dark, ¾ length, bloodstained hooded down jacket, apparently cut
during medical intervention (Contents listed in Evidence Items
#733929-3 thru 8)
Recovered from Placard 8

Evidence Item #733929-3
Knife

Black handled, 4-1/2 inch blade, "Stainless China"
Recovered from left jacket pocket

Evidence Item #733929-4
Contents of Left Jacket Pocket

Washington Quest card, *King County Metro* transfer ticket, keychain
sized *Seattle Public Library* card, red earbuds, used tissue
(Excluding knife listed as Evidence Item #733929-3 and \$17.25
listed with Evidence Item #733929-8)
Recovered from left jacket pocket

Evidence Item #733929-5
Identification

Washington Identification card with hole for Charleene Cravon Lyles
and punctured *Seattle Public Library* card, both bloodstained
Recovered from left breast pocket of jacket

PRIMARY DETECTIVE

SERIAL

UNIT

SECONDARY DETECTIVE

SERIAL

UNIT

APPROVING OFFICER/

SERIAL

Kim Biggs

6312

B765D

Lisa Haakenstad

6025

B765



6378

C.S.I CONTINUATION SHEET

INCIDENT NUMBER	17-219301
UNIT FILE NUMBER	CSI 17-041

ITEM OR ENTRY	PAGE 20 OF 21																
<p>Evidence Item #733929-6 Knife Sheath Tan plastic knife sheath Recovered from jacket liner under right lower pocket (Right lower pocket had large tear which sheath easily fit through to remove.)</p> <p>Evidence Item #733929-7 Lighter Pink Bic lighter Recovered from jacket liner under right lower pocket (Right lower pocket had large tear which lighter easily fit through to remove.)</p> <p>Evidence Item #733929-8 US Currency \$18.35, Currency envelope #M000016853 Recovered from left jacket pocket and left breast pocket</p>																	
<p>D <u>INVOLVED PERSONS:</u> As described on page 12, FIT Det. Dewey and Officer McNew responded to the scene while I was processing the apartment. I was present when Officer McNew told Det. Dewey where he believed he and the subject were, when he fired his pistol.</p> <p>I did not knowingly have contact with any other witnesses to the incident.</p>																	
<p>E <u>MISCELLANEOUS:</u></p> <p><u>Wednesday 06/21/2017:</u> Sgt. Grinstead and I met with FIT Lt. Hirjak, Sgt. Davisson and Det. Dewey at the FIT office. Lt. Hirjak said that a round count showed that either seven or eight rounds were fired by the two officers combined. Sgt. Davisson believed that three fired bullets were removed from the body during autopsy. Det. Dewey said that he would forward a copy of the autopsy report to me.</p> <p><u>Monday 07/17/2017:</u> I checked evidence items 733421-2 (knife at Placard 2) and 733929-6 (knife sheath) out of the SPD evidence storage. I examined and compared both items in the SPD evidence room. I laid the items side by side and measured them separately. Based on color, texture, size and shape I concluded that the sheath and the knife appeared to belong together as one unit. (I did not place the knife in the sheath.) I then repackaged, sealed and submitted both items back into storage under their original property item numbers.</p> <p><u>Tuesday 07/18/2017:</u> I spoke with KCME Dr. Mazrim. Dr. Mazrim had performed the autopsy on the deceased. He confirmed that KCME personnel had not recovered any pants, shorts or skirt for the deceased. Dr. Mazrim informed me that he had recovered three fired, jacketed, hollow-point bullets from the body. He said that the deceased appeared to have been shot seven times.</p>																	
<table border="1"> <thead> <tr> <th>PRIMARY DETECTIVE</th> <th>SERIAL</th> <th>UNIT</th> <th>SECONDARY DETECTIVE</th> <th>SERIAL</th> <th>UNIT</th> <th>APPROVING OFFICER</th> <th>SERIAL</th> </tr> </thead> <tbody> <tr> <td>Kim Biggs</td> <td>6312</td> <td>B765D</td> <td>Lisa Haakenstad</td> <td>6025</td> <td>B765</td> <td><i>[Signature]</i></td> <td>16578</td> </tr> </tbody> </table>	PRIMARY DETECTIVE	SERIAL	UNIT	SECONDARY DETECTIVE	SERIAL	UNIT	APPROVING OFFICER	SERIAL	Kim Biggs	6312	B765D	Lisa Haakenstad	6025	B765	<i>[Signature]</i>	16578	
PRIMARY DETECTIVE	SERIAL	UNIT	SECONDARY DETECTIVE	SERIAL	UNIT	APPROVING OFFICER	SERIAL										
Kim Biggs	6312	B765D	Lisa Haakenstad	6025	B765	<i>[Signature]</i>	16578										

C.S.I CONTINUATION SHEET

INCIDENT NUMBER	17-219301
UNIT FILE NUMBER	CSI 17-041

ITEM
OR
ENTRY

PAGE 21 OF 21

Dr. Mazrim explained that four bullets appeared to have entered and then exited the body. These four bullets would be consistent with the four fired bullets recovered at the scene from Defects 1-4.

Friday 08/25/2017: FIT Det. Dewey forwarded me a copy of the KCME Autopsy Report.

END OF REPORT

PRIMARY DETECTIVE	SERIAL	UNIT	SECONDARY DETECTIVE	SERIAL	UNIT	APPROVING OFFICER	SERIAL
Kim Biggs	6312	B765D	Lisa Haakenstad	6025	B765		6378